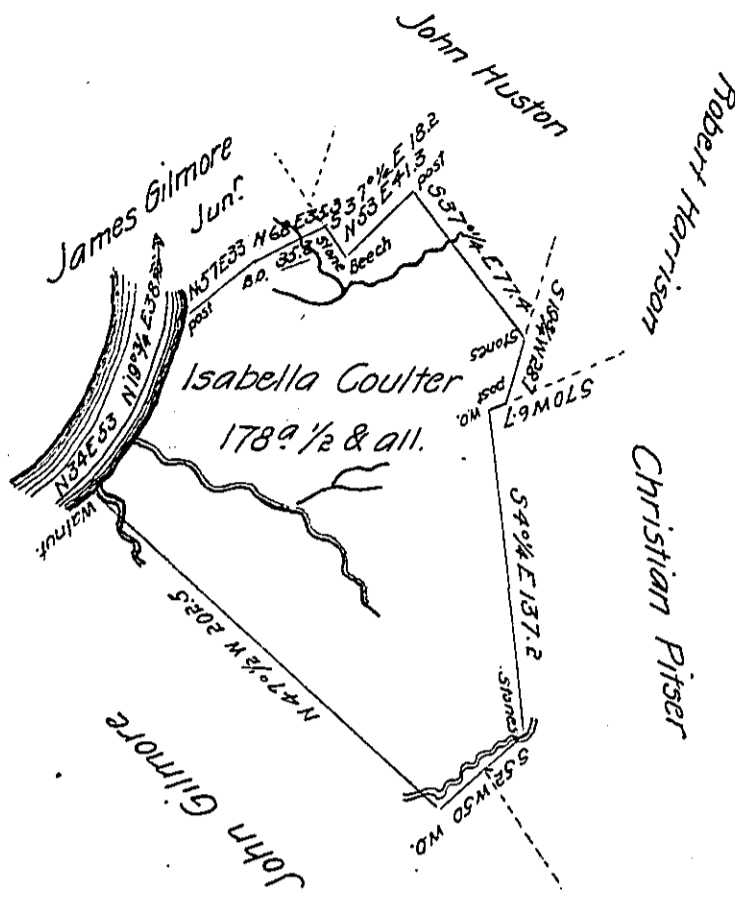


Note, A Caveat is entered against the acceptance of this Survey—probably not well defined but this puts an end to the dispute between Hugh Gilmore & Christian Pitzer I prevailed upon them to settle it on the ground & this Survey is agreeable thereto, which I certify
 A M Clean
 To: D. B. E. S. G.



Situate on the East Side of Monongahela River in German Township Fayette County and Surveyed the 24th day of March 1790 in pursuance of a Warrant dated the 2^d day of October 1786

P

Alexander M. Clean Deputy

To Daniel Brodhead Esquire }
 Surveyor Generale }

IN TESTIMONY that the above is a copy of the original remaining on file in the Department of Internal Affairs of Pennsylvania, made conformably to an Act of Assembly approved the 16th day of February, 1833, I have hereunto set my Hand and caused the Seal of said Department to be affixed at Harrisburg, this second day of April 1904

James B. Brown
 Secretary of Internal Affairs.